

Invitation

TERRITORIAL IMPACT ASSESSMENT

Introduction of territorial impact assessment in Slovenia and different approaches to assessment in cross-border areas

Thursday, 30 November 2023 / City Museum, Gosposka ulica 15, Ljubljana

Experience in Slovenia and abroad shows that development policies at different levels are often poorly aligned with long-term strategic spatial development goals and objectives. There is a need for integrated and coherent spatial governance, which requires enhanced dialogue between stakeholders and thus more open and coherent policymaking and implementation at all levels of governance.

The Territorial Agenda 2030, with its vision of a sustainable future for all places and people, highlights the need to understand and integrate the diverse needs of territories into policymaking. Territorial Impact Assessments can also contribute to this. The Territorial Agenda pilot action on how policies shape spatial imbalances in cross-border areas tested the approach of territorial impact assessments in different pilot areas and designed a manual. Activities to develop and implement Territorial Impact Assessments are also supported by the European Commission. The Committee of the Regions uses Territorial Impact Assessment to formulate opinions on EU legislative acts, supported by the assessment toolkit developed by ESPON.

Territorial Impact Assessment (TIA) helps to identify the effects that the achievement of objectives and the implementation of policies can have on the use and management of territories and, more broadly, on the economy, society, and the environment. It informs policy makers about the impacts of their policies and allows policy objectives and measures to be aligned with the needs and challenges of different areas, e.g., rural, urban, mountainous, and cross-border.

How are we approaching the introduction of territorial impact assessment in Slovenia? What are the good practices in other European countries and how to approach the territorial impact assessment in a cross-border context?

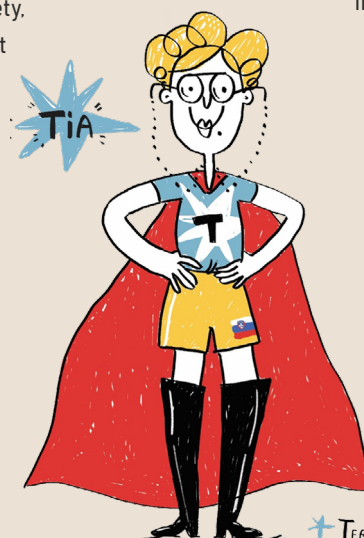
These are the questions we will address at the conference TERRITORIAL IMPACT ASSESSMENT organised by the Ministry of Natural Resources and Spatial Planning on 30 November 2023 in Ljubljana. The aim of the conference is to increase knowledge and awareness of the importance of territorial impact assessments and to present possible methodological approaches for impact assessment to ministries, municipalities, regional agencies, spatial planners and the wider professional public.

In the first part, lecturers who participated in the **pilot activity for the implementation of the Territorial Agenda 2030** will present methodological approaches to assessment in cross-border areas.

In the second part, the authors of a **targeted research project on territorial impact assessment** will present their findings and results. In addition, we will learn about the **different approaches to impact assessment at national level**, i. e. Ministry of Public Administration, Ministry of Culture as well as the German approach. The conference also aims to discuss the importance of assessments of policies with potential territorial impacts. You are cordially invited!

The event is organised by the Ministry of Natural Resources and Spatial Planning and is free of charge. It will be held in Slovenian and English with simultaneous interpretation.

→ [Registration](#)



CONFERENCE AGENDA

Thursday, 30 November 2023 / City Museum, Gosposka ulica 15, Ljubljana

8.30	ARRIVAL AND REGISTRATION
9.00	WELCOME <i>Ministry of Natural Resources and Spatial Planning</i> PART ONE — TERRITORIAL IMPACT ASSESSMENTS IN THE CROSS-BORDER AREA ≈ Territorial Agenda 2030 and the Pilot Actions <i>Tomaž Miklavčič, Ministry of Natural Resources and Spatial Planning</i> ≈ Understanding how sectoral policies contribute to spatial (in)balances: Pilot action to the Territorial Agenda 2030 and SPA(TIA) <i>Patrycja Artymowska, Ministry of Development Funds and Regional Policy, Poland</i> ≈ German-Polish example of planning a cross-border railway connection <i>Jürgen Neumüller, Joint Department for Spatial Planning Berlin – Brandenburg, Germany</i> ≈ The Dutch case of Territorial Impact Assessment of European policy and legislation on the national area and implementation at the regional/local level <i>Marcia van der Vlugt, Ministry of Infrastructure and the Environment, The Netherlands</i>
10.20	COFFEE BREAK
10.50	≈ Participative territory-oriented policy analysis of Strategy for the Development of Transport in the Republic of Slovenia until 2030: an example of cross-border area EGTC (European Grouping of Territorial Cooperation) GO <i>Naja Marot, Biotechnical faculty, University of Ljubljana</i> ≈ Qualitative Territorial Impact Assessment of the Cultural Heritage Strategy 2020-2023 in a cross-border context: an example of Obsotelje and Kozjansko area <i>Barbara Kostanjšek, Biotechnical faculty, University of Ljubljana</i>
11.10	ROUNDTABLE Importance of territorial impact assessment of policies <i>moderated by Blanka Bartol, Ministry of Natural Resources and Spatial Planning</i>
12.00	LUNCH
13.00	PART TWO — IMPACT ASSESSMENT AT THE NATIONAL LEVEL: THE EXAMPLES OF GERMANY AND SLOVENIA ≈ Presentation of the German case: Impact assessment on the equality of living conditions <i>Daniel Meltzian, Federal Ministry for Housing, Urban Development and Building, Germany</i> ≈ Territorial Impact Assessment as a tool to achieve harmonization of sectoral and other development policies with the Spatial Development Strategy of the Republic of Slovenia 2050 <i>Naja Marot, Biotechnical faculty, University of Ljubljana</i> ≈ Impact assessment on cultural heritage <i>Barbara Mlakar, Ministry of Culture</i> ≈ Presentation of the methodology for impact assessment on various social areas and the Modular tool for the preparation of electronic documents <i>Katja Urek, Ministry of Public Administration, and Anamarija Patricija Masten, Government Office for Legislation</i>
14.20	ROUNDTABLE <i>moderated by Naja Marot, Biotechnical faculty, University of Ljubljana</i>
14.50	SUMMARY AND CONCLUSION