



The Vesdre watershed after the 2021 floods

European Territorial Agenda – Belgian Pilot Action

September 11, 2023

Table of content

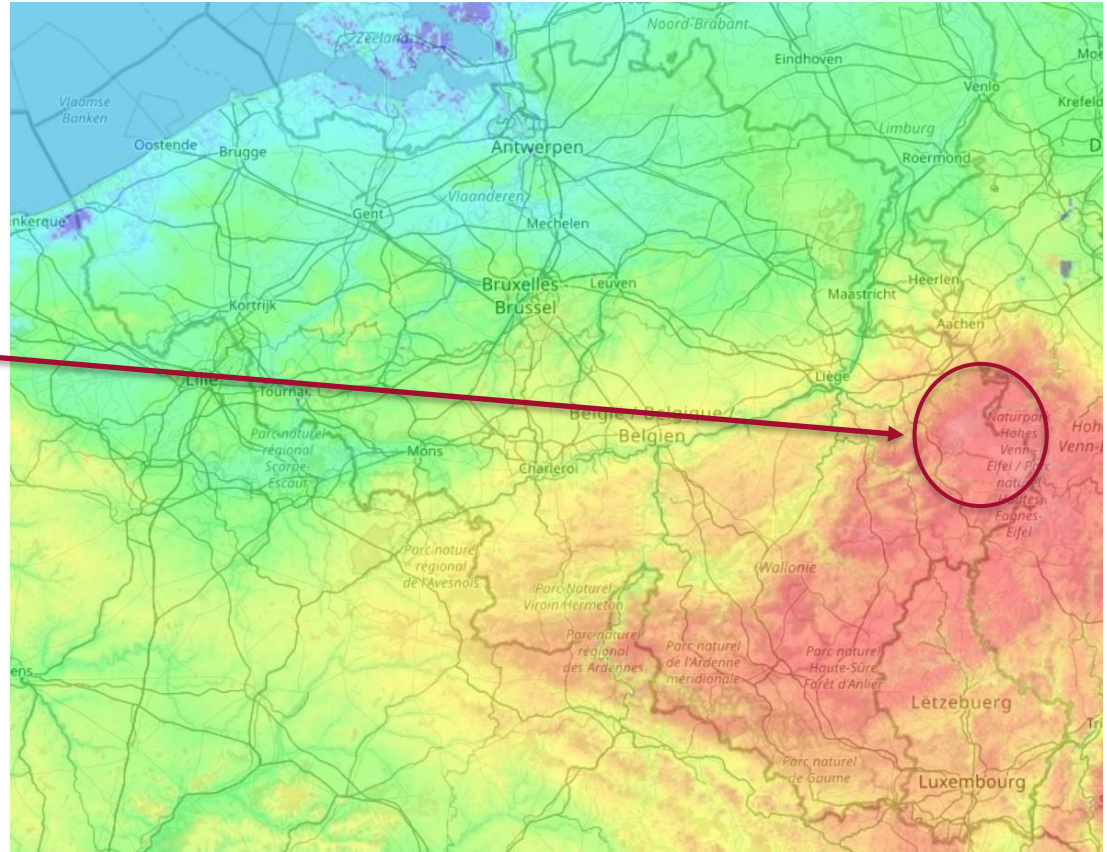
- **Context : July 2021 floods**
- **The Walloon Region reaction**
- **Studies in the Vesdre watershed :**
 - **Multidisciplinary strategic plan of the Vesdre watershed (Vesdre Plan) :**
 - Main results : diagnostic and strategic plan
 - Governance aspects
 - **Sustainable neighbourhood (re)development programs (PDDQ) :**
 - Main results
 - Governance aspects

July 2021 floods

July 14 and 15, 2021

Hautes-Fagnes :

In 2 days, more than 2 months of rain on soils already waterlogged



July 2021 floods

28/01/2025

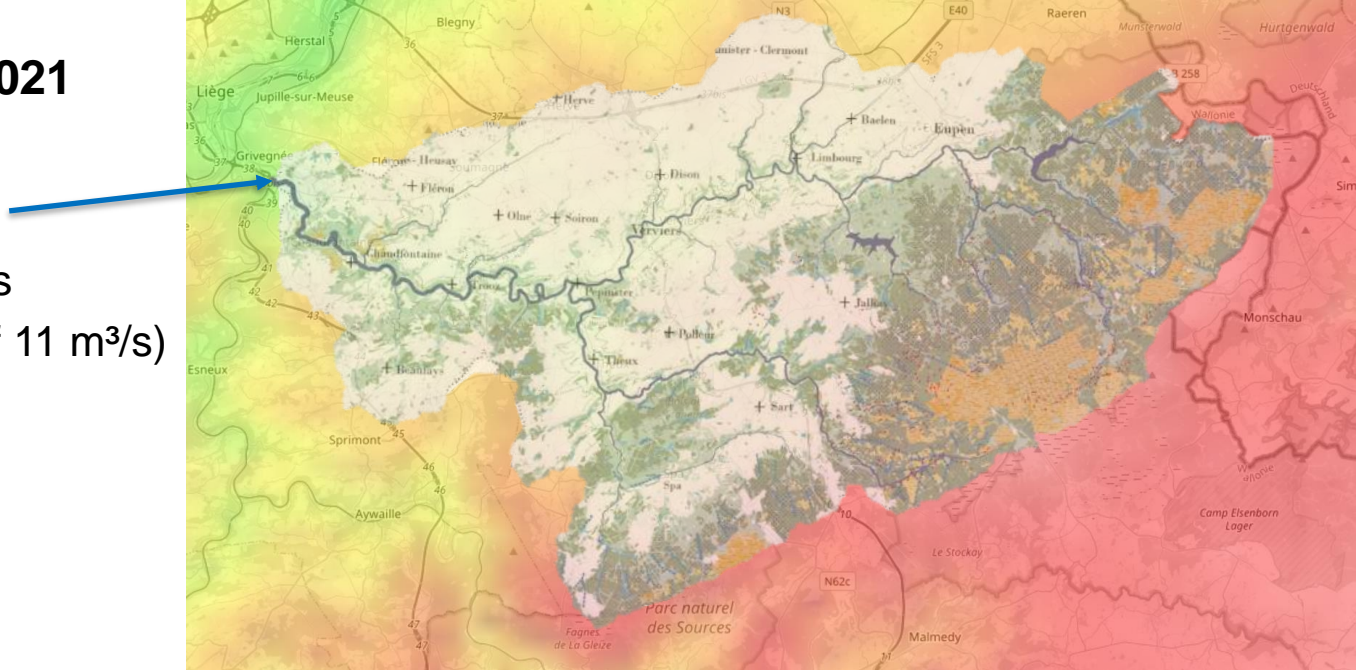
4

July 14 and 15, 2021

Chênée (Liège) :

Flow rate of 640 m³/s

(average flow rate of 11 m³/s)



Considerable human and material damage

28/01/2025

5



The Walloon Region reaction



- **Urgent relief measures** (compensation for victims, rehousing of affected people, repair and reconstruction of infrastructures...)
- **Establishment of the "Special Commission for Reconstruction" (CSR)**
Temporary structure to coordinate the regional response (horizontal coordination) and the different levels of authority (vertical coordination)
- **Various studies launched to achieve sustainable reconstruction :**
 - Multidisciplinary strategic plan for the Vesdre watershed (Vesdre Plan)
 - Sustainable neighbourhood (re)development programs (PDDQ)
 - Development of two permit framework referentials
 - Hydrological and hydraulic study of the Vesdre watershed (MODREC)
 - Urban planning support for disaster-stricken municipalities
 - ...

The Walloon Region reaction

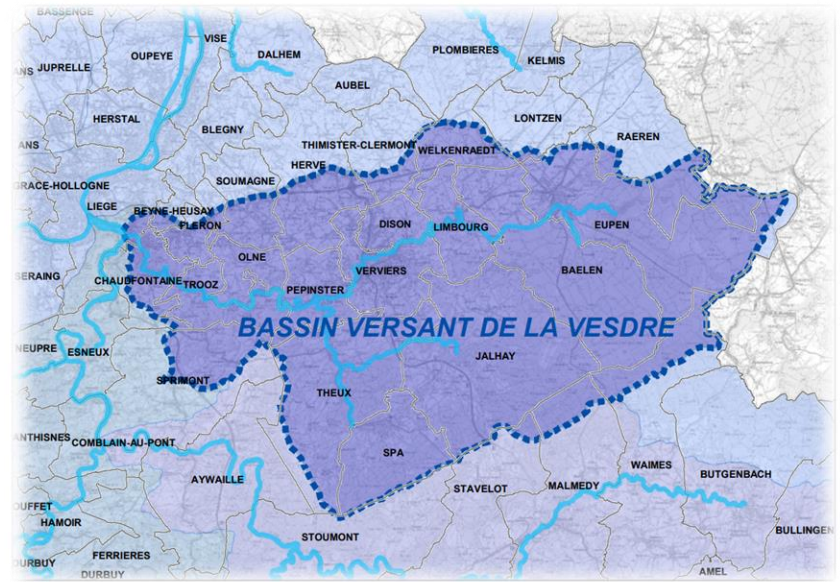


- **Urgent relief measures** (compensation for victims, rehousing of affected people, repair and reconstruction of infrastructures...)
- **Establishment of the "Special Commission for Reconstruction" (CSR)**
Temporary structure to coordinate the regional response (horizontal coordination) and the different levels of authority (vertical coordination)
- **Various studies launched to achieve sustainable reconstruction :**
 - Multidisciplinary strategic plan for the Vesdre watershed (Vesdre Plan)
 - Sustainable neighbourhood (re)development programs (PDDQ)
 - Development of two permit framework referentials
 - Hydrological and hydraulic study of the Vesdre watershed (MODREC)
 - Urban planning support for disaster-stricken municipalities
 - ...

« Vesdre Plan »

Study aimed at defining a vision for sustainable reconstruction of the territory by 2050 to mitigate and adapt to the consequences of climate change

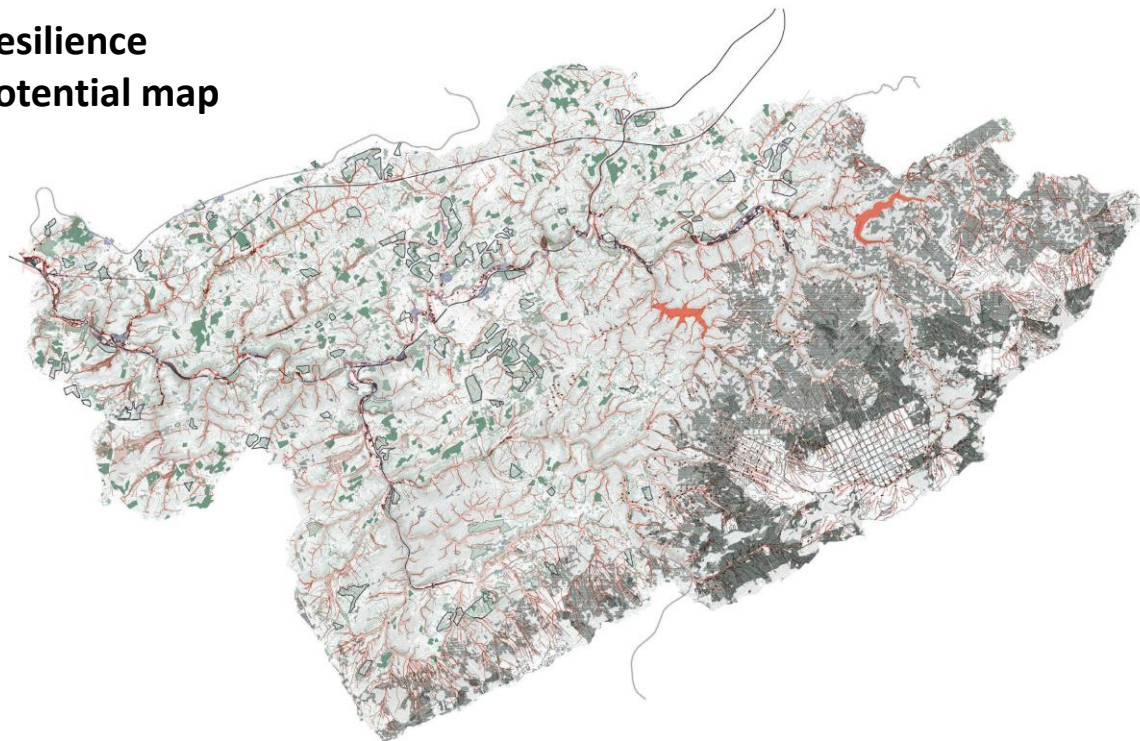
→ The « Vesdre Plan » has no legal value ; it is a **decision-making tool** (territorial planning, urban planning)



25 municipalities are located in the Vesdre watershed

« Vesdre Plan » : Multithematic diagnostic

Resilience potential map

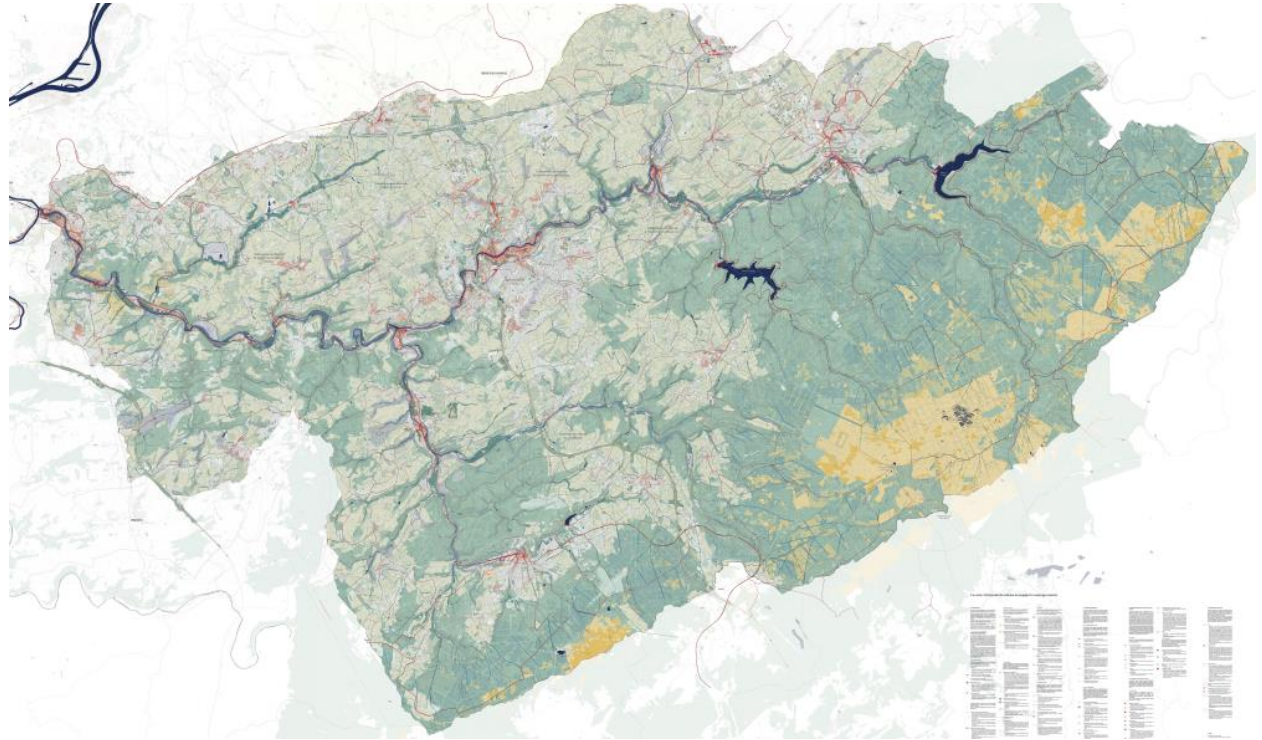


« Vesdre Plan » : Vision by 2050

Strategic plan map

Main topics :

- water spaces and soils/subsoils
- agriculture and forest
- landscape quality and public space
- mobility systems
- building regeneration

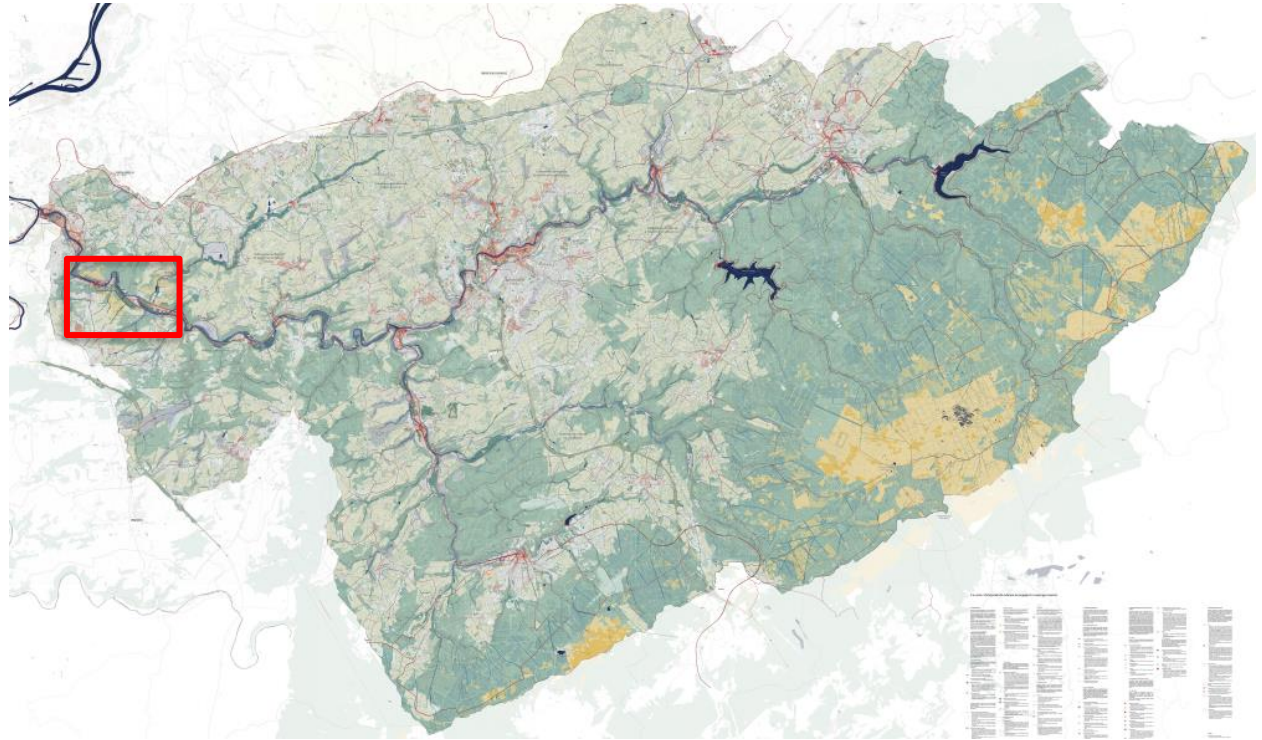


« Vesdre Plan » : Vision by 2050

Strategic plan map

Main topics :

- water spaces and soils/subsoils
- agriculture and forest
- landscape quality and public space
- mobility systems
- building regeneration

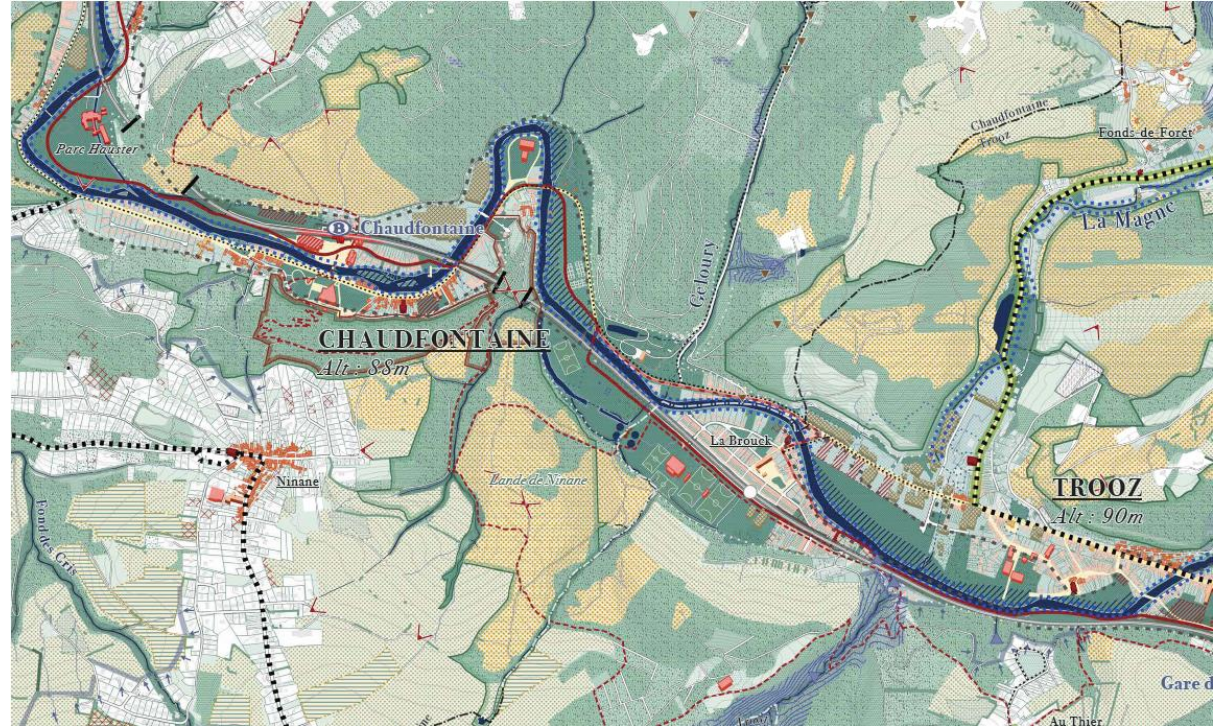


« Vesdre Plan » : Vision by 2050

Strategic plan map

Main topics :

- water spaces and soils/subsoils
- agriculture and forest
- landscape quality and public space
- mobility systems
- building regeneration



« Vesdre Plan » : Governance aspects



Public procurement monitoring :

➤ Support committee :

- Consists of the service provider, ministerial representatives and regional administration ;
- Place of exchange between different territorial approaches ;
- The committee approves the different parts of the mission.

➤ Local monitoring committee :

- Consists of members of the Support committee and local actors, in particular the 25 municipalities ;
- The committee monitors the execution of the public procurement.

« Vesdre Plan » : Governance aspects



Participatory process implemented by the service provider :

- Field visits and numerous exchanges with municipalities
- 3 public presentations of the diagnosis
- Information sessions for citizens
- 3 workshops with citizens (construction of the strategic plan and vision)
- Workshops with representatives of the 25 municipalities
- Website (www.vallee-vesdre.be)
- Conference of Mayors
- Public presentations of the « Vesdre Plan »

SCHEMA STRATEGIQUE POUR LE BASSIN VERSANT DE LA VESDRE
INVITATION OUVERTE À TOUS

Après plus d'une année de travail, pendant laquelle nous avons organisé des présentations publiques, du diagnostic, des permanences et ateliers participatifs qui ont contribué à son élaboration, nous avons le plaisir de vous inviter à la :

**PREMIERE PRÉSENTATION PUBLIQUE DU
SCHÉMA STRATEGIQUE POUR LE BASSIN VERSANT DE LA VESDRE**
LE VENDREDI 30 JUIN 2023 À 18H30
À LA SALLE OMNISPORT DE DOLHAIN, RUE WILSON, 54 À 4830 LIMBOURG

La présentation sera suivie d'un moment d'échange convivial.
Pour la bonne organisation de cette soirée, il vous est demandé de nous confirmer votre participation en remplissant le formulaire disponible via le lien ci-contre avant le mercredi 21 juin 2023.
Nous vous en remercions d'avance.

Inscrivez-vous en cliquant ici

Lien vers le formulaire : <https://forms.gle/3Y1Czdd8M8W2288>

« Vesdre Plan » : Problems and solutions

Problems :

- Multiplicity and timing of flood-related studies
- Necessary duration for the conception of the « Vesdre Plan » may be perceived as « too long » by municipalities and citizens

« Vesdre Plan » : Problems and solutions

Problems :

- Multiplicity and timing of flood-related studies
- Necessary duration for the conception of the « Vesdre Plan » may be perceived as « too long » by municipalities and citizens

Solutions :

- Ensuring good coordination between the different regional administrations and between the authors of the different studies
- Involve and exchange with the local authorities (municipalities) :
 - to ensure a good understanding of the approaches implemented by the Walloon Region
 - to promote the appropriation of the results by the local authorities
- Bring together municipalities sharing the same territory around a common project
- Importance of citizen involvement and information

Thanks for your attention